

# 7

## Accessories



- ◆ Explosion protection to
  - CENELEC
  - IEC
  - NEC
- ◆ Can be used in
  - Zone 1 and Zone 2
  - Zone 21 and Zone 22
  - Class I, Zone 1 and Zone 2
  - Class I, Division 1, Groups A , B, C, D
  - Class I, Division 2, Groups A , B, C, D

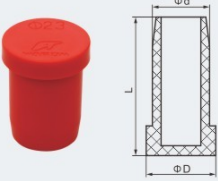
- ◆ Accessories for cable gland include stopping rod, stopping plug, shroud, earth lug, etc., meeting requirements of connection between enclosure and cable gland.
- ◆ For example, the DQM-I Ex e stopping is used for DQM-I Ex e cable gland to plug up Ex e enclosure.
- ◆ Ex e stopping plug in plastic is used to plug up cable entries on Ex e enclosure.
- ◆ Ex d stopping plug in aluminium alloy and metal is used to plug up cable entries on Ex d enclosure.
- ◆ The shroud protects cable gland against damage.
- ◆ The earth lug between cable gland and enclosure is used for earth connection.



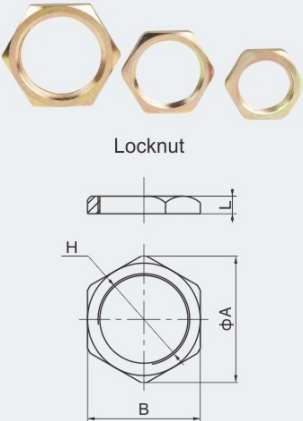
Zones 1&2; 21&22

## Accessories

## Selection table of DQM-I Ex e stopping rod

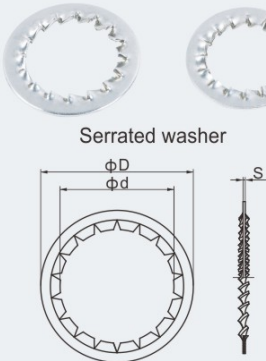
Version	Specification	Dimensions (mm)			Ordering code	Weight (kg)
		L	D	d		
 DQM-I Ex e stopping rod	Φ 8 (for M16 x 1.5, M20 x 1.5)	24	10	7.5	713001	0.05
	Φ 12 (for M25 x 1.5, M32 x 1.5)	28	13	11.5	713002	0.05
	Φ 23 (for M40 x 1.5)	34	27	23	713003	0.05
	Φ 32 (for M50 x 1.5, M63 x 1.5)	34	35	32	713004	0.05
<b>Material:</b> Plastic <b>Ambient temperature:</b> -40°C~+55°C <b>Function:</b> Suitable for DQM-I Ex e unarmored cable gland (see P7/16).						

## Selection table of locknut

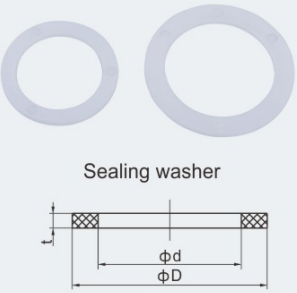
Version	Entry thread "H"			Dimensions (mm)			Ordering code	Weight (kg)
	Metric	NPT	G	A	B	L		
 Locknut	M16	-	-	22	19	3.5	714001	0.003
	M20	1/2"	1/2"	27	24	3	714002	0.005
	M25	3/4"	3/4"	36	32	4	714003	0.012
	M32	1"	1"	42	38	5	714004	0.017
	M40	1 1/4"	1 1/4"	51	46	6	714005	0.026
	M50	1 1/2"	1 1/2"	60	55	6	714006	0.028
	M63	2"	2"	75	70	6	714007	0.055
	M75	2 1/2"	2 1/2"	90	85	6	714008	0.078
	M90	3"	3"	105	100	8	714009	0.146
	M115	4"	4"	130	125	8	714010	0.255
<b>Material:</b> Galvanized carbon steel, nickel plated brass or stainless steel. <b>Function:</b> Secures a cable gland in position at the equipment. <b>Note:</b> 1. Metric thread is standard type; G thread or NPT thread is optional. Please specify material when ordering. The above weight is based upon carbon steel. 2. Metric threads are 1.5mm pitch as standard, others thread pitch can be customized, please specify when ordering.								



## Selection table of serrated washer

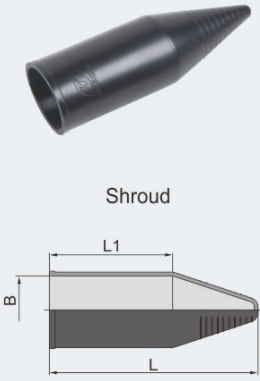
Version	Specification	Dimensions (mm)			Ordering code	Weight (kg)
		D	d	s		
 Serrated washer	For M20 x 1.5	33	21	1.5	715001	0.005
	For M25 x 1.5	37	27.5	1.5	715002	0.006
	For M32 x 1.5	45.5	34	1.5	715003	0.008
	For M40 x 1.5	55	42.5	1.5	715004	0.010
	For M50 x 1.5	64.5	50.5	1.5	715005	0.014
	For M63 x 1.5	78	63.5	1.5	715006	0.024
	For M75 x 1.5	92.5	75.5	1.5	715007	0.033
<b>Material:</b> Stainless steel <b>Function:</b> For use on cable gland entry threads.						

## Selection table of sealing washer

Version	Specification	Dimensions (mm)			Ordering code	Weight (kg)
		D	d	t		
 <p>Sealing washer</p>	For M20 x 1.5	28	20	2	716001	0.0010
	For M25 x 1.5	35	25	2	716002	0.0018
	For M32 x 1.5	42	32	2	716003	0.0019
	For M40 x 1.5	50	40	2	716004	0.0025
	For M50 x 1.5	60	50	2	716005	0.0031
	For M63 x 1.5	74	63	2	716006	0.0045
	For M75 x 1.5	90	75	2	716007	0.0051
	For M90 x 1.5	108	90	2	716008	0.0130
	For M115 x 1.5	130	115	2	716009	0.0122

**Material:** Teflon (PTFE)  
**Function:** For use on cable gland entry threads.


## Selection table of shroud

Version	Size Code	Dimensions (mm)			For						Ordering code	Weight (kg)
					DQM-I		DQM-II		DQM-III			
		B	L	L1	Metal Unarmored	Metal Armored	Unarmored Single Seal	Armored Dual seal	Unarmored Compound Barrier	Armored Compound Barrier		
 <p>Shroud</p>	A	30	126	60	M20	M20A M20B M25A	M20A M20B	M20A M20B M25A	M20A M20B M25A	717001	0.015	
	B	36	110	65	M25	M20C M25B M32A	M25	M20C M25B M32A	M25B M32A	M20C M25B M32A	717002	0.019
	C	44	125	70	M32	M25C M32B M40A	M32	M25C M32B M40A	M32B M40A	M25C M32B M40A	717003	0.027
	D	53	140	75	M40	M32C M40B M50A	M40	M32C M40B M50A	M40B M50A	M32C M40B M50A	717004	0.073
	E	64	145	85	M50	M40C M50B M63A	M50	M40C M50B M63A	M50B M63A	M40C M50B M63A	717005	0.100
	F	76	155	95	M63	M50C M63B M75A	M63	M50C M63B M75A	M63B M75A	M50C M63B M75A	717006	0.165
	G	92	185	115	M75	M63C M75B	M75	M63C M75B	M75B	M63C M75B	717007	0.200
	H	108	200	120	-	M75C	M90	M75C	-	M75C	717008	0.250
	I	120	205	125	-	M90	-	M90	-	M90	717009	0.350
	J	136	225	130	-	M115	M115	M115	M115	M115	717010	0.400


**Material:** Polyvinyl chloride (PVC)  
**Function:** For fitting over cable glands when additional environmental and corrosion protection is required.

## Accessories

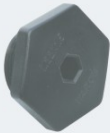
## Selection table of earth lug

Version	Specification ( $\Phi$ A,mm)	Rated short circuit current per second (kA)	Ordering code	Weight(kg)
 <p>Earth lug</p> <p><math>\Phi</math>A</p>	20	3.0	718001	0.05
	25	4.0	718002	0.05
	32	5.4	718003	0.05
	40	7.2	718004	0.05
	50	10.4	718005	0.10
	63	10.4	718006	0.10
	75	10.4	718007	0.15
	90	10.4	718008	0.20
	115	10.4	718009	0.30
	<b>Material:</b> Nickel plated brass <b>Function:</b> Earth connection.			

## Selection table of BPS(H) explosion-proof drain plug (Breather)

 <p><math>\Phi</math>22</p> <p>47</p> <p>M20x1.5</p> <p>24</p> <p><math>\Phi</math>26</p>	<b>Explosion protection</b>	
	Global (IECEX)	IECEX CQM 13.0035U
	Gas and dust	Ex d IIC Gb
	Europe (ATEX)	DNV 13 ATEX 2631U
	Gas and dust	Ex II 2 G Ex d IIC Gb
<b>Certificates</b>	IECEX; ATEX	
<b>Conformity to standards</b>	EN 60079-0, EN 60079-1 IEC 60079-0, IEC 60079-1	
<b>Material</b>	SS316	
<b>Thread specification</b>	M20x1.5	
<b>Ambient temperature</b>	-60°C~+150°C	

## Selection table of stopping plug (Ex e, plastic)

Version	Specification	Dimensions(mm)			Ordering code	Weight(kg)
		M	L1	L2		
 <p>BPT-e Ex e stopping plug (plastic)</p> <p>L1</p> <p>L2</p> <p>M</p>	M16 x 1.5	M16 x 1.5	19	15	719001	0.003
				25	719002	
	M20 x 1.5	M20 x 1.5	24	15	719003	0.005
				25	719004	
	M25 x 1.5	M25 x 1.5	29	15	719005	0.005
				25	719006	
	M32 x 1.5	M32 x 1.5	41	15	719007	0.008
				25	719008	
	M40 x 1.5	M40 x 1.5	50	15	719009	0.011
				25	719010	
	M50 x 1.5	M50 x 1.5	57	15	719011	0.022
				25	719012	
	M63 x 1.5	M63 x 1.5	70	15	719013	0.040
				25	719014	
<b>Explosion protection:</b>						
Global (IECEX)		IECEX CQM 16.0021X				
Gas and dust		Ex e IIC Gb Ex tb IIIC Db IP66				
Europe (ATEX)		EPT 16 ATEX 2502				
Gas and dust		Ex II 2 G Ex eb IIC Gb Ex II 2 D Ex tb IIIC Db				
<b>Certificates</b> IECEX; ATEX						
<b>Degree of protection</b> IP66						
<b>Ambient temperature</b> -40°C~+70°C						
<b>Material</b> PA66 (Polyamide)						
<b>Function</b> To be used at spare entries of explosion-proof equipment; made of plastic; corrosion-proof and waterproof; Metric thread is standard type. Supplied with seal gasket.						
<b>Note:</b> Shall be used together with locknut.						



## Selection table of BPT stopping plug (Ex d Ex e)

## Version

## Explosion protection

Global (IECEX) IECEX LCIE 15.0070U

Gas and dust Ex db IIC Gb

Ex e IIC Gb

Ex tb IIIC Db IP66

Europe (ATEX) LCIE 09 ATEX 3040U

Gas and dust  $\text{Ex}$  II 2 G Ex db IIC Gb $\text{Ex}$  II 2 G Ex e IIC Gb $\text{Ex}$  II 2 D Ex tb IIIC Db IP66

Certificates IECEX; ATEX; CU-TR

## Degree of protection

IP66

## Ambient temperature

-60°C ~ +100°C

## Material

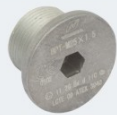
Copper-free Aluminium Alloy, galvanized carbon steel, nickel plated brass or stainless steel.

## Function

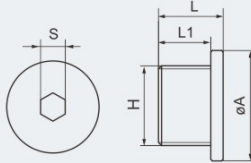
Metric thread is standard type; G thread or NPT thread is optional. To be used at spare entries of explosion-proof equipment; corrosion-proof and waterproof; supplied with seal gasket (not applicable for NPT thread).

**Note:** 1. Please specify material when ordering. The above weight is based upon nickel plated brass.

2. Metric threads are 1.5mm pitch as standard, others thread pitch can be customized, please specify when ordering.

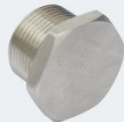


BPT Ex stopping plug

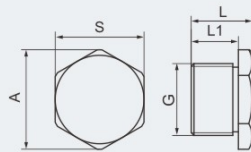


## BPT stopping plug (Copper-free Aluminium Alloy)

Entry thread "H"			Dimensions(mm)				Ordering code	Weight (kg)
Metric	NPT	G	A	S	L	L1		
M20	1/2"	1/2"	30	8	22	17	720001	0.05
M25	3/4"	3/4"	36	8	21	17	720002	0.05
M32	1"	1"	45	10	26	20	720003	0.05
M40	1 1/4"	1 1/4"	54	10	26	20	720004	0.05
M50	1 1/2"	1 1/2"	62	10	26	20	720005	0.10
M63	2"	2"	77	10	26	20	720006	0.16



BPT Ex stopping plug (Metric/G)

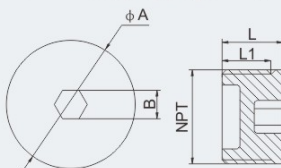


## BPT stopping plug (galvanized carbon steel, nickel plated brass or stainless steel)

Entry thread "G"		Dimensions(mm)				Ordering code	Weight (kg)
Metric	G	A	S	L	L1		
M20	1/2"	30	27	22	17	720007	0.05
M25	3/4"	36	32	22	17	720008	0.07
M32	1"	42	38	26	20	720009	0.15
M40	1 1/4"	52	47	26	20	720010	0.17
M50	1 1/2"	60	55	26	20	720011	0.26
M63	2"	70	66	30	22	720012	0.47
M75	2 1/2"	88	83	30	22	720013	0.66
M90	3"	100	95	32	24	720014	0.90
M115	4"	127	122	32	24	720015	1.15





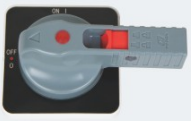



BPT Ex stopping plug (NPT)



## BPT stopping plug (nickel plated brass or stainless steel)

Entry thread "NPT"		Dimensions(mm)				Ordering code	Weight (kg)
NPT	A	B	L	L1			
1/2"	22	10	17	15	720016	0.05	
3/4"	27	10	17	15	720017	0.07	
1"	34	10	21	19	720018	0.15	
1 1/4"	43	10	21	19	720019	0.17	
1 1/2"	49	19	22	19	720020	0.26	
2"	61	19	23	20	720021	0.47	
2 1/2"	74	19	32	29	720022	0.66	
3"	90	19	34	31	720023	0.90	
4"	115	19	38	34	720024	1.15	

## Accessories

Description of MCCB and MCB rotary actuator with padlock					
Version	Description	Ordering code	Version	Description	Ordering code
	MCCB rotary actuator, metal material, with padlock, suitable for the locking bar outer diameter of $\Phi 6$ - $\Phi 8$ .	721001		MCB rotary actuator, metal material, with padlock, suitable for the locking bar outer diameter of $\Phi 3$ - $\Phi 4.5$ .	721004
	MCCB rotary actuator, plastic material, with padlock, suitable for the locking bar outer diameter of $\Phi 5.5$ - $\Phi 8$ .	721002		MCB rotary actuator, plastic material, with padlock, suitable for the locking bar outer diameter of $\Phi 3$ - $\Phi 6.5$ .	721005
	The product is provided with padlock, suitable for MCCB rotary actuator, the outer diameter of locking bar is $\Phi 6$ .	721003		The product is provided with padlock, suitable for MCB rotary actuator, the outer diameter of locking bar is $\Phi 4$ .	721006

**Note:** The conventional color of Padlock is red, other other colors can be customized, please specify when ordering.

